

Council of the Haida Nation "Haida Fisheries Program"



Since 1989

Command Structure

- CHN Executive
- CHN Committees and Working Groups
 - Administrator
 - Program Manager
 - Program Biologists
 - Fisheries Guardians
 - Fisheries Technicians

Mandate of Haida Fisheries

- Is to take a role in the development of fisheries policy and Management affecting Haida Gwaii.
- Consider all fisheries and marine issues.
- Provide advice to the Council of the Haida Nation about political or other actions.
- Assess and review all commercial and recreational fisheries including annual and long term management plans, policies and regulations of Federal and Provincial Governments, inclusive of environmental and habitat protection.
- Assess resource development plans affecting fisheries resources and fresh water and marine environments.
- **“Priority for the protection of the Aboriginal Rights and Title of Haida people, particularly related to fisheries and marine resources”**

Haida Fisheries Staff

- Program Manager – *Pat Fairweather*
- Assistant Manager – Irene Bruce
- Contract Biologist (north)- Sharon Jefferies
- Contract Biologist (south)- Vacant
- Fisheries Guardians – Robert Russ, George Wesley, Paul Rosang, Brad Setso, Edward Davis
- Technicians – Ken Williams, Barney Edgars, Vanessa Bellis
- Seasonal Staff – includes up to 30 persons.

Projects and Initiatives

HERRING

Fishery Management

- Spawn overflights
- Sounding/sampling

Spawn Dive Surveys

- 25 day charter

Spawn on kelp fishery monitoring

- J-licence on grounds monitor
- Traditional fishery monitoring



Salmon Projects

Smolt Sampling

- Sockeye smolt fences and fyke netting. (Copper, Yakoun, Ian and Awun Lakes)
- Coho Smolts CWT program targeting 25,000 smolts.



Pallant Creek Hatchery

- Increased production from 15 to 25 million chum and 1 million coho eggs. HFP operated since 1998



Salmon (continued)

Escapement Monitoring

- Coho (AUC) monitoring on the Deena River, one of five coho indicator systems for the north.
- Copper River Sockeye fence
- Yakoun counting fence
- Fall chum escapement monitoring
- Coho and Sockeye fall spawner enumerations.



Shellfish Projects



Red Sea Urchin Survey

- Population Density studies.
- Tagging program
- Site manipulation



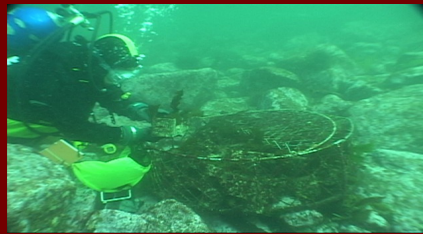
Geoduck Survey

- Population Density Studies

Shellfish (continued)

Abalone

- Stewardship and Assessment
- Joint partnership with DFO
- 5 research areas (langara, Naden, laskeek bay, East Lyell and Skincuttle).
- 140 abalone condos.
- 8 tag sites.



Shellfish (continued)



Razor Clam Assessment and monitoring

- Newly signed agreement between CHN and DFO.
- Population density survey.
- Paralytic Shellfish Poison (PSP) sampling.
- North beach creel survey (recreational crab and razor clam fisheries)

Watchmen Program



Recreational Fishery Monitoring

- Ambassador for the Haida Nation.
 - Camps in Naden Harbour and Kiis Gwaii.
 - Creel survey in Masset, Skidegate and Rennell Sound.
 - Creel overflights of Skidegate to Rennell Sound.
- Collect catch and release data, biosample fish species and boat counts.

Fisheries Guardians

- The role of the fisheries guardian is a very diverse, from monitoring, assessment and enforcement work.
 - Recreational and Commercial fishery enforcement.
 - including salmon, red sea urchin, geoducks, herring, crab, groundfish and clams.
 - Fisheries and habitat monitoring.
 - Joint patrol with DFO fisheries officers.
 - Traditional food fisheries monitoring.
 - Abalone Coast Watch.
 - Unique dive enforcement team.
 - Public relations officer.
 - Ambassador for the Haida Nation.

New Programs

Intergrated Marine Use Planning

- Development of a Haida Gwaii Marine Use Plan
- Collaborative marine use planning with other coastal first nations of the north and central coasts and with government agencies.
- Haida marine traditional knowledge study. (to be completed at end of this year).
- Mapping of Coastal and marine uses and values for Haida Gwaii waters.

Staff

Project Manager

- *Russ Jones*

Socio-economic Planner

-*Cathy Rigg*

Biologist Planner

-*Lynn Lee*

G.I.S Analysis

-*Chris McDowgall*

Challenges

- **Funding** — Zero increase in funding dollars to AFS agreements.
- **Cost of living increases**- wages, fuel & food
- **Training** — Limited opportunity for training dollars and courses offered.
- **Capacity building** — staff and equipment.
- **Increased Authority**
- **Job Security**

Thank-you (Howa)



If there are any questions please feel free to ask me at this time